

AGENDA



South East Lincolnshire
Joint Strategic Planning Committee

- Committee - **SOUTH EAST LINCOLNSHIRE JOINT STRATEGIC PLANNING COMMITTEE**
- Date & Time - Friday, 6 March 2015 at 10.00 am
- Venue - Boston Borough Council Offices, West Street, Boston

Membership of the South East Lincolnshire Joint Strategic Planning Committee:

South Holland District Council: Councillors B Alcock, R Gambba-Jones and H R Johnson
(Substitutes: Councillors F Biggadike, C J T H Brewis and R M Rudkin)

Boston Borough Council: Councillors P Bedford, C Brotherton and R Leggott
(Substitutes: Councillors S Ashton, F Pickett and M Wright)

Lincolnshire County Council: Councillors A Austin, M Brookes and C Davie
(Substitutes: Councillor C N Worth)

Substitutions – Substitute members will have full voting rights for individual meetings only; and Substitute members allowed to attend all meetings of the South East Lincolnshire Joint Strategic Planning Committee to contribute but not vote.

Terms of Reference – The preparation, submission, adoption, monitoring and revision of joint local development documents identified in a joint local development scheme; and the preparation, submission, adoption, monitoring and revision of a joint local development scheme, in respect of those documents.

A voting member who is unable to attend any meeting of the Joint Committee shall inform the Chair of the Joint Committee in writing as soon as practicable and in any event not later than 24 hours before the meeting is due to take place

Democratic Services
Council Offices, Priory Road
Spalding, Lincs PE11 2XE

Persons attending the meeting are
requested to turn their mobile telephones to
silent

Date: 20 February 2015

A G E N D A

1. Apologies for absence.
2. Election of Chairman.
3. Election of Vice-Chairman.
(To be from a different authority to that of the Chairman.)
4. Minutes - To sign as a correct record the notes of the meeting of the South East Lincolnshire Joint Strategic Planning Committee meeting held on 28 February 2014. (Copy enclosed.) (Pages 1 - 4)
5. Draft Revised Local Development Scheme for South East Lincolnshire - To seek approval for a revised Local Development Scheme for South East Lincolnshire. (Report of the Joint Policy Unit Manager enclosed.) (Pages 5 - 22)
6. Any other items which the Chairman decides are urgent.

Note: No other business is permitted unless by reason of special circumstances, which shall be specified in the minutes, the Chairman is of the opinion that the item(s) should be considered as a matter of urgency.

Minutes of a meeting of the **SOUTH EAST LINCOLNSHIRE JOINT STRATEGIC PLANNING COMMITTEE** held in the Council Chamber, Council Offices, Priory Road, Spalding, on Friday, 28 February 2014 at 10.00 am.

PRESENT

H R Johnson (Chairman)
P Bedford (Vice-Chairman)

B Alcock
R Gambba-Jones

A Austin
M Brookes

Planning Manager (Breckland and South Holland District Councils), Deputy Planning Manager (Breckland and South Holland District Councils), Joint Policy Unit Manager (South Holland District Council), Senior Planning Policy Officer (South Holland District Council), Planning Policy Officer (South Holland District Council), Deputy Joint Policy Unit Manager (Boston Borough Council), Forward Planning Officers (Boston Borough Council), Principal Planning Officer (Lincolnshire County Council), Environment Agency Officers, Planning Solicitor (Legal Services Lincolnshire) and Member Services Officer (South Holland District Council).

In Attendance: Councillors F Biggadike and R M Rudkin.

Apologies for absence were received from or on behalf of Councillors C Brotherton, R Leggott and C Davie and the Head of Built Environment and Development (Boston Borough Council).

13. **MINUTES**

The minutes of the meeting held on 25 November 2013 were signed by the Chairman as a correct record.

14. **DRAFT REVISED LOCAL DEVELOPMENT SCHEME FOR SOUTH EAST LINCOLNSHIRE**

Consideration was given to the report of the Joint Policy Unit Manager which sought approval for a revised local development scheme for South East Lincolnshire. A copy of the 'Draft Revised Local Development Scheme February 2014' was attached as Appendix 1 within the report.

The Joint Policy Unit Manager expressed his thanks to Hannah Albans and Janette Collier who had taken copious notes at the last committee meeting.

**SOUTH EAST LINCOLNSHIRE JOINT
STRATEGIC PLANNING COMMITTEE - 28**
February 2014

The Joint Policy Unit Manager informed members that a review of plan preparation had recently been undertaken. As a result, it was recommended that, in order to maximise the chances of a development plan document being found sound by an Independent Inspector, further work on the preparation of the South East Lincolnshire Local Plan should proceed on the basis outlined in revised paragraph numbers 6.2 and 6.3 of the report, namely:

- That a single Local Plan for South East Lincolnshire would be prepared instead of the two separate development plan documents; and
- That the plan period would be extended up to 2036.

There followed some discussion on matters relating to the recent withdrawal from examination of the Central Lincolnshire Core Strategy Development Plan Document, other local plan examinations across the country and the provision of community and physical infrastructure in support of new housing schemes.

Afterwards, it was proposed by Councillor Brookes that recommendation 2 of the report be approved. This was seconded by Councillor Gambba-Jones and unanimously agreed; which enabled consideration to be given to recommendation 3.

The Joint Policy Unit Manager then explained the role of the local development scheme and the statutory requirements relating to its preparation and keeping it up to date. As the Joint Committee had just approved a recommendation to prepare a single local plan document, there was a need to revise the current local development scheme accordingly and to set out a timetable for delivering such a document.

There followed discussion on the contents of the proposed single local plan document, and its timetable for preparation and cost implications.

Further discussion focussed on Councillor Gambba-Jones' concerns as to when officers thought current plan preparation work would begin to influence planning decisions and, in particular, would achieve a position of being able to resist large unacceptable housing schemes given the probability, in the near future, of being unable to demonstrate a six-year supply of deliverable sites for housing development.

Councillor Austin expressed concern about the indecisive nature of the term 'a project plan for the next 3 years or so' in section 1.3 of the local development scheme, to which officers responded by suggesting the following revision: 'a project plan setting out the timetable for the local plan'.

The Deputy Planning Manager suggested that a simple Gantt chart in the appendix would assist in clarifying the timetable; and that contacting the Planning Inspectorate might help to lend detail to the post-submission stages.

The Chairman concluded the discussion by indicating that he considered the suggested minor changes to the local development scheme were sensible.

**SOUTH EAST LINCOLNSHIRE JOINT
STRATEGIC PLANNING COMMITTEE - 28**
February 2014

DECISION:

- a) That the contents of the report and the attached Draft Revised Local Development Scheme (Draft LDS) be noted;
- b) That a single local plan document for South East Lincolnshire be prepared;
- c) That the Draft LDS be approved, with revisions; and
- d) That the finalised LDS be effective from 14 March 2014.

(Councillor R Gambba-Jones entered the meeting at 10.15 am, during consideration of the above item.)

15. ANY OTHER ITEMS WHICH THE CHAIRMAN DECIDES ARE URGENT.

Retail Study

The Deputy Joint Policy Unit Manager reported that there was a new retail study on the South East Lincolnshire Local Plan website under the Economy section (<http://southeastlincslocalplan.org/economy/>), the results of which would be presented to a future Steering Group meeting.

16. FUTURE MEETING DATES

The next meeting of the South East Lincolnshire Joint Strategic Planning Committee was scheduled to be held on 3 October 2014 at 10.00 am at Boston Borough Council, Municipal Buildings, West Street, Boston.

(The meeting ended at 11.18 am)

(End of minutes)

This page is intentionally left blank

SOUTH EAST LINCOLNSHIRE JOINT STRATEGIC PLANNING COMMITTEE (THE JOINT COMMITTEE)

Report of the Joint Policy Unit Manager

To: Joint Committee – 06 March 2015

Author: Gary Alexander, Joint Policy Unit Manager

Subject: Draft Revised Local Development Scheme for South East Lincolnshire

Purpose: To seek approval for a revised Local Development Scheme for South East Lincolnshire

Recommendations:

It is recommended that:

- a) Members consider the contents of this report and the attached Draft Revised Local Development Scheme;
- b) agree, with or without revisions, to approve the Draft Revised Local Development Scheme; and
- c) that it shall have effect from 20 March 2014.

1.0 INTRODUCTION

- 1.1 Section 15 of the Planning & Compulsory Purchase Act 2004, as amended, requires that every local planning authority should prepare and maintain a scheme to be known as its 'Local Development Scheme' (LDS). In the case of the Joint Committee, the purpose of the LDS is to provide a public statement of its programme for the production of Local Development Documents that will comprise its South East Lincolnshire Local Plan and its 'Statement of Community Involvement' (SCI).
- 1.2 The LDS is basically a project plan that sets out key milestones in the preparation of the Local Plan and can be updated and amended as and when circumstances deem it appropriate.
- 1.3 Under the provisions of the Localism Act 2011 and The Town and Country Planning (Local Planning) (England) Regulations 2012, there are arrangements in place to govern the preparation of LDSs. LDSs relating to areas outside London no longer need to be submitted to the Secretary of State for consideration.

2.0 CURRENT LOCAL DEVELOPMENT SCHEME

- 2.1 On 28 February, 2014, the Joint Committee considered a report which reviewed work on the preparation of the South East Lincolnshire Local Plan (Local Plan) up to that point and citing other factors impacting upon plan preparation.
- 2.2 The report recommended that, in order to maximise the chances of a development plan document being found sound by an independent Inspector, further work on the

preparation of the Local Plan should proceed on the basis of the preparation of a single Local Plan for South East Lincolnshire instead of two separate development plan documents, and that the plan period be extended up to 2036.

2.3 The Joint Committee approved the above recommendations and, consequently, at the same meeting, a 'Revised Local Development Scheme March 2014' for South East Lincolnshire.

2.4 The March 2014 LDS indicated the following key milestones:

- Further public consultation to take place between October and November 2014
- Public consultation on the Draft Local Plan to take place between October and November 2015
- Submission of the Draft Local Plan to the Planning Inspectorate - December 2015
- Examination in Public - March 2016
- Adoption - August 2016.

3.0 THE NEED TO UPDATE THE LOCAL DEVELOPMENT SCHEME

3.1 This report has been prepared because Officers now consider the timetable for preparing the Local Plan, set out in the current LDS approved in February, 2014, to be unachievable. As indicated above, the current LDS sets out **December 2015** as the date for 'Submission of Draft Local Plan to the Planning Inspectorate'. It is the need to accommodate a projected slippage in reaching this milestone that has generated the requirement for the revision of the LDS.

3.2 One of the reasons for the delay in plan preparation that has occurred arises from the loss, last year, of two full-time officers from the Joint Policy Unit (out of a full establishment of only five and a half full-time equivalents). The first post became vacant in May and the second in July, and it was not possible to fill both of the vacancies until just before last Christmas. Accordingly, it has not been possible to progress significant elements of plan-preparation work, particularly in respect of sustainability appraisal, and the economy and town centres including the identification of related site options. Specifically for South Holland District, there was the creation of a backlog in housing monitoring work.

3.3 Another cause for revision has been the view, supported by viability consultants, that the next iteration of the Local Plan document should be subject to the process of 'whole plan viability assessment' (WPVA). The concept of WPVA has become increasingly important following the publication of the Government's National Planning Policy Framework (NPPF) in May 2012, in which emphasis is placed on the need for careful attention to viability and costs in plan-making and decision-taking. The NPPF states:

'To ensure viability, the costs of any requirements likely to be applied to development, such as requirements for affordable housing, standards, infrastructure contributions or other requirements should, when taking account of the normal cost of

development and mitigation, provide competitive returns to a willing land owner and willing developer to enable the development to be deliverable.'

3.4 Nationally, as issues concerning the viability of development have increased, the strong recommendation from the consultants undertaking the WPVA work is that it should relate to the currently- emerging Local Plan proposals (which include a large number of site options) and then, where appropriate, inform revisions to them before approval for public consultation. Consequently, the public consultation exercise will allow consideration of relevant Local Plan policies and proposals to be informed by evidence relating to their viability. This should serve to restrict the number of objections founded on such a concern. The WPVA process was originally viewed as running parallel with plan preparation but, as now proposed, forms part of it, and, therefore, there is a need to extend the time required by 4 months.

4.0 DRAFT REVISED LOCAL DEVELOPMENT SCHEME MARCH 2015

4.1 The Draft Revised Local Development Scheme March 2015 forms **Appendix 1** to this report. It covers planned work commencing in January of this year and running through to 2017, and sets out details of the documents whose preparation will be given priority during this period.

4.2 As a consequence of the considerations set out in Section 3 of this report, it is now proposed to amend the key milestones as follows:

- Public consultation on an Interim Statement between **October and November 2015**
- Submission of the Draft Local Plan to the Planning Inspectorate in **August 2016**
- Examination in Public - **November 2016**
- Adoption - **February 2017**.

4.3 Subject to favourable circumstances following submission, over which both the Joint Committee and the Joint Policy Unit have no control, the Examination could commence in November 2016, with adoption of the Local Plan taking place in early 2017.

4.4 Members are advised that the precise timing of milestones after submission are dependent upon the availability of Planning Inspectorate resources at the time and the nature of any concerns about the contents of the Local Plan raised by objectors and/or the Inspector. This latter point will be influenced to a great extent by the robustness of the approach to Local Plan preparation and compliance with procedural requirements including the Duty to Cooperate, and whether it is sound.

4.5 To this end, both Boston Borough and South Holland District Councils are being supported by specialist consultants to assist in the project management of the Local Plan. This should provide comfort to Members that the final stages of Local Plan preparation are fully aligned with this revised LDS (subject to Members' approval) and avoid further slippage.

4.6 A revised timetable for plan preparation up to adoption of the Local Plan is featured in the attached **Appendix 1**.

5.0 VIEWS OF THE HEAD OF BUILT ENVIRONMENT AND DEVELOPMENT FOR BOSTON BOROUGH COUNCIL, THE PLANNING MANAGER FOR BRECKLAND COUNCIL AND SOUTH HOLLAND DISTRICT COUNCIL, AND OTHER CONSULTEES

5.1 The Head of Built Environment and Development for Boston Borough Council and the Planning Manager for Breckland Council and South Holland District Council have been consulted, and have provided the following joint response:

'It is regrettable that our ability to submit our Local Plan to the Planning Inspectorate for examination, now to be in August 2016 rather than the previously proposed December of this year, has been affected. The ongoing lack of a five-year housing supply in both our Districts increasingly risks developments coming forward in locations that are not necessarily of our choosing, although our effective Development Control/Management sections and robust application of our current saved Local Plan policies do, we consider, reduce that risk considerably. We support the revised Local Development Scheme and appreciate that a successful and sound Local Plan that meets all the tests at an Examination is a considerable challenge and requires careful work. However, we would not wish to see any further slippage of the timetable and, with the Joint Committee's support, will work closely with the planning teams to ensure that the milestones set out in the LDS are achieved.'

5.2 The Monitoring Officer for Breckland Council and South Holland District Council has been consulted and no comments received.

5.3 The Monitoring Officer for Boston Borough Council has been consulted and no comments received.

5.4 The s151 Officer for Breckland Council and South Holland District Council has been consulted and no comments received.

5.5 The s151 Officer for Boston Borough Council has been consulted and no comments received.

5.6 The Lincolnshire County Council Strategic Planning Manager, Monitoring Officer and s151 Officer have been consulted and no comments received.

6.0 OPTIONS

6.1 Members can:

- accept the contents of the Draft LDS; or
- request amendments to it.

7.0 REASONS FOR RECOMMENDATIONS

7.1 There is a need to make certain that every opportunity is taken to ensure that the Local Plan will be found sound at examination; and there is a current statutory

requirement for the Joint Committee to revise its LDS at such time as it considers appropriate.

8.0 IMPLICATIONS

- 8.1 **Risk:** There are risks associated with extending the length of time without an adopted Local Plan in place, but these are outweighed by the consequences of having the Local Plan found unsound at Examination.
- 8.2 **Financial:** There are no direct financial implications arising from the recommendations to this report.
- 8.3 **Legal:** See para 7.1
- 8.4 **Equality and Diversity:** There are no direct equality and diversity implications arising from the recommendations to this report. However, it is a requirement of the LDS, and indeed all Local Plan documents, that equality and diversity issues are fully considered and taken on board. The SCI ensures that all Local Plan documents involve widespread consultation and the full participation of residents and businesses within both Boston Borough and South Holland District. The views, needs and aspirations of each district's diverse population will in this manner be reflected in subsequent plans and policies aimed at meeting the various needs of all societal groupings.

9.0 WARDS/COMMUNITIES AFFECTED

- 9.1 The implications of the proposed new Local Plan documents affect all wards/communities.

Background papers - None

Lead Contact Officer

Name/Post: Gary Alexander, South East Lincolnshire Joint Policy Unit Manager
Telephone Number: 01775 761161
Email: info@sholland.gov.uk

Appendices attached to this report:

Appendix 1: Draft Revised Local Development Scheme March 2015

This page is intentionally left blank

Appendix 1

SOUTH EAST LINCOLNSHIRE JOINT STRATEGIC PLANNING COMMITTEE

Draft Revised

LOCAL DEVELOPMENT SCHEME

March 2015



**South East Lincolnshire
Joint Strategic Planning Committee**

PREFACE

On 5th July 2011 the South East Lincolnshire Joint Strategic Planning Committee Order 2011 came into force (2011 No.1455). This Order establishes a Joint Strategic Planning Committee (Joint Committee) for the areas of the districts of Boston and South Holland (known collectively as South East Lincolnshire). The constituent authorities are Lincolnshire County Council, Boston Borough Council and South Holland District Council.

Article 3 of the Order constitutes the Joint Committee as the local planning authority for South East Lincolnshire for the purposes of Part 2 (local development) of the Planning and Compulsory Purchase Act 2004, as amended, (the 2004 Act). Together with article 4 it provides for the Joint Committee to exercise the functions of a local planning authority in relation to:

- the preparation, submission, adoption, monitoring and revision of joint local development documents identified in a joint local development scheme; and
- the preparation, submission, adoption, monitoring and revision of a joint local development scheme, in respect of those documents.

Article 4(2) modifies section 15 of the 2004 Act so as to require the Joint Committee to submit its 'local development scheme' to the Secretary of State for Communities and Local Government (Secretary of State) no later than 30th September 2011.

The Joint Committee approved its first local development scheme (LDS) for submission to the Secretary of State at its first meeting held on 9th September 2011. That LDS came into effect on 31st October 2011.

That document was superseded by a first revision of the LDS approved by the Joint Committee on 13 July 2012, which came into effect on 31 July 2012.

A second revision of the LDS came into effect on 14 March 2014.

This document supersedes the second revision of the LDS.

CONTENTS

	Page No
Preface	
1 Introduction	3
2 Content	3
3 The South East Lincolnshire Local Plan	4
4 Community Infrastructure Levy	5
5 Additional local development documents	6
6 Other related documents	6

Appendices

Appendix 1: Local Plan Profile and Timetable

Appendix 2: South East Lincolnshire Local Plan Timetable (Gantt Chart)

Appendix 3: Contact details

1.0 Introduction

- 1.1 Under section 15 of the Planning & Compulsory Purchase Act 2004, as amended, (the 2004 Act) every relevant local planning authority must prepare and maintain a scheme to be known as its 'local development scheme' (LDS). The purpose of the LDS is to specify the subject matter, area and the timetable for the preparation and revision of local development documents (LDDs), including the Statement of Community Involvement (SCI).
- 1.2 This LDS has been prepared by the South East Lincolnshire Joint Strategic Planning Committee (the Joint Committee) and sets out a programme for the production of an LDD that will form its South East Lincolnshire Local Plan (the Local Plan).
- 1.3 In essence, it is a project plan setting out the timetable for the Local Plan and will be a living document that can be updated and amended as and when appropriate. It covers work to be undertaken from January 2015 to the end of 2017 and sets out details of the documents whose preparation will be given priority during this period.
- 1.4 It should be noted that this LDS has been prepared having regard to the Localism Act 2011, the Government's National Planning Policy Framework (NPPF), published in March 2012, and the Government's Town and Country Planning (Local Planning) (England) Regulations 2012 (the 'Local Planning Regulations' [which came into force on 6 April 2012]).
- 1.5 Unlike previous related regulations, the Local Planning Regulations do not contain any specific provisions relating to the preparation of the LDS, giving councils the freedom to report the information that they think most relevant to local people, while maintaining the requirement to keep the public informed about the status of planning documents. In particular, local planning authorities are no longer required to submit the LDS to the Secretary of State.

2.0 Content

- 2.1 This LDS illustrates in detail how the Joint Committee intends to progress preparation of its Local Plan up to 2017.

- 2.2 Priority has been given to preparing an LDD which will follow the full statutory process and will form part of the 'development plan'¹ for the area. This is known as a 'local plan' under the Local Planning Regulations and a 'development plan document' (DPD) for the purposes of section 17 (7) (a) of the 2004 Act. The preparation of this document will be subject to the process of independent examination by an Inspector appointed by the Secretary of State (for Communities and Local Government).
- 2.3 Consideration has also been given to the preparation of the other principal type of LDD, known as a 'supplementary planning document' (SPD). SPDs are documents which add further detail to the policies in the Local Plan. The process for preparing a SPD is similar to the process for preparing a DPD but simplified. In particular, there is no requirement for a SPD to be subject to independent examination. At the present time, it is not intended to prepare a SPD but this matter will be kept under review.

3.0 The South East Lincolnshire Local Plan

- 3.1 Over time the Local Plan will replace the saved policies in the Boston Borough and South Holland Local Plans. The Local Plan should attempt to give an effective spatial expression to the vision and aspirations of South East Lincolnshire's local communities and to those elements of the relevant strategies and programmes which relate to the development and use of land in the area. This should be coupled with a local interpretation of the requirements of the national planning policies, particularly the NPPF.
- 3.2 The Local Plan will, in essence, be a single DPD. A **Community Infrastructure Levy (CIL) Charging Schedule** may also form part of the Local Plan (see paras 4.1-2) but this will not have development plan status.
- 3.3 The Local Plan will contain:
- an overall vision for South East Lincolnshire which sets out how the area and places within it should develop;
 - a set of strategic priorities for the area focussing on the key issues that need to be addressed;

¹ The National Planning Policy Framework states that the 'development plan' 'includes adopted Local Plans, neighbourhood plans and the London Plan, and is defined in section 38 of the Planning and Compulsory Purchase Act 2004. Section 38(6) of the 2004 Act states: 'If regard is to be had to the development plan for the purpose of any determination to be made under the planning Acts the determination must be made in accordance with the plan unless material considerations indicate otherwise.'

- a set of strategic policies that address the strategic priorities;
- a suite of criteria-based policies to be taken into account when considering development;
- a 'delivery' section containing sufficient detail in relation to allocated sites and any broad locations to provide clarity to developers, local communities and other interests about the nature and scale of development; and
- where appropriate, a key diagram including any broad locations for strategic development.

Proposals Map

3.4 On adoption it will be supported by an adopted **proposals map (also now described as a policies map)** which will be updated on each occasion a new or revised DPD is adopted.

3.5 The adopted proposals map will illustrate the allocations and designations required to assist the delivery of the strategic priorities for South East Lincolnshire.

4.0 Community Infrastructure Levy

4.1 The Community Infrastructure Levy (CIL) is a new planning charge that allows local authorities to raise funds from developers. The money can be used to pay for infrastructure that is needed as a result of development. Under current arrangements, the responsible body for approving a CIL is an individual local authority's Full Council (known as a 'charging authority'). Therefore, in the case of South East Lincolnshire, CILs will have to be approved separately by Boston Borough and South Holland District Councils – and not the Joint Committee.

4.2 The Government expects charging authorities to implement the CIL on the basis of the infrastructure requirements identified in an up-to-date DPD which should normally be a draft or adopted Local Plan (or 'core strategy' (-type document)). The preparation of an individual CIL 'charging schedule' must also involve consultation and independent examination. Consequently, it is envisaged that work on the preparation of CILs relating to South East Lincolnshire will be undertaken in conjunction with DPD preparation and by the same staff resources. A final decision on the preparation of CILs for South East Lincolnshire will be informed by future work on development viability which forms part of the preparation of the Local Plan.

5.0 Additional local development documents

- 5.1 The need to enhance the Local Plan through the preparation of additional local development documents will be considered in due course.

6.0 Other related documents

- 6.1 Under section 18 of the 2004 Act, the Joint Committee must produce a **Statement of Community Involvement (SCI)**. The SCI sets out the Joint Committee's policy on community involvement in the preparation of the Local Plan and the determination of planning applications.
- 6.2 The Joint Committee adopted its current SCI in April 2012.
- 6.3 The SCI will be monitored and kept up to date via the Joint Committee's '**Monitoring Report**'. Under the Localism Act, a local planning authority no longer has to make an annual monitoring report, on the implementation of its LDS, to the Secretary of State. But the duty to monitor remains, and requires a Monitoring Report to be prepared for local people, in the interests of local transparency and accountability. The new Local Planning Regulations set out the detailed requirements of the Monitoring Report, including monitoring information to be made available 'online' and in council offices as soon as it is available to the local planning authority, rather than waiting to publish it only on an annual basis.
- 6.4 In view of these requirements, relevant information is now published on the Local Plan website as soon as it becomes available and consolidated in the form of a South East Lincolnshire Monitoring Report which is published annually in July.
- 6.5 More detailed information on the preparation of the Local Plan is set out in Appendix 1: Local Plan Profile and Timetable.

Appendix 1: Local Plan Profile and Timetable

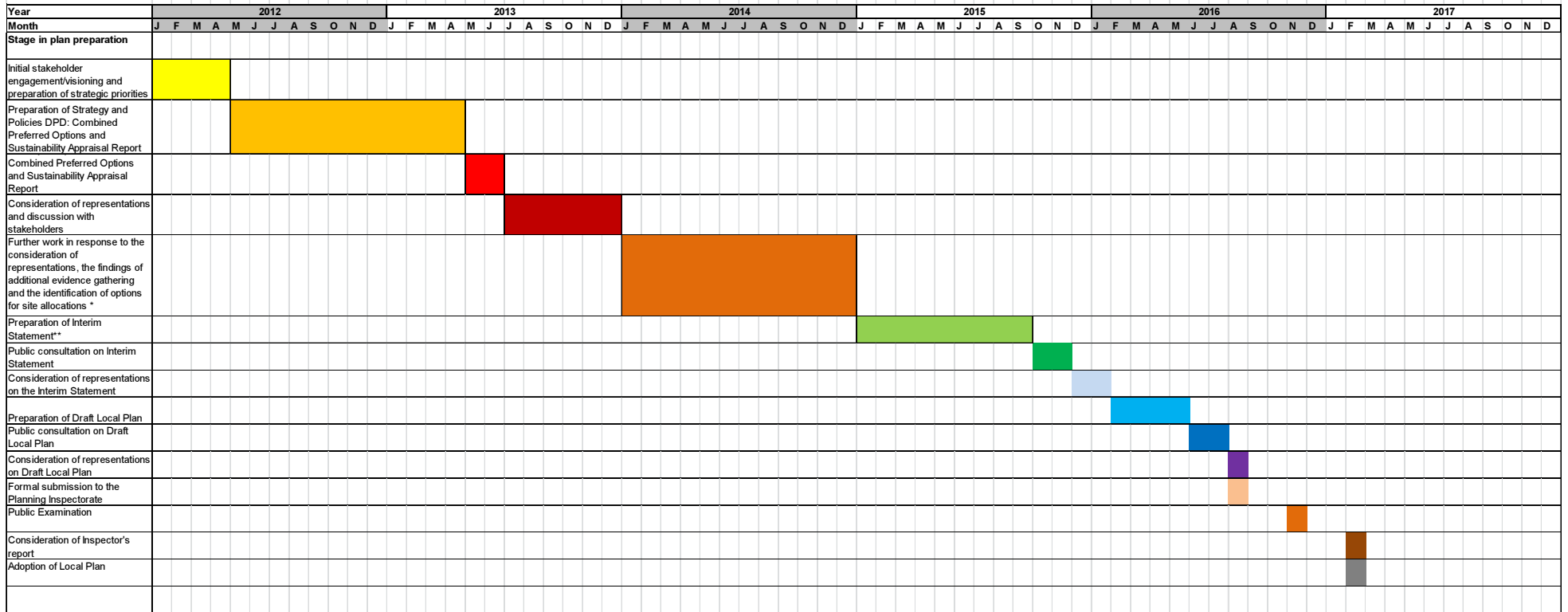
The following table sets out a brief description of the Local Plan, details of previous work relating to its preparation and a timetable for future production.

South East Lincolnshire Local Plan		
Document Details	<ul style="list-style-type: none"> • Role and Subject • Geographic Coverage • DPD/SPD • Chain of Conformity 	<p>Document setting out:</p> <ul style="list-style-type: none"> • a vision and set of strategic priorities for South East Lincolnshire to 2036 • a set of strategic policies that address the strategic priorities • a suite of criteria-based development management policies • a 'delivery' section containing sufficient detail in relation to allocated sites and any broad locations to provide clarity to developers, local communities and other interests about the nature and scale of development • where appropriate, broad locations for development illustrated on a key diagram • a Proposals (Policies) Map illustrating the designations and strategic and other allocations of land for housing, employment and other types of development required to assist the delivery of the strategic priorities for South East Lincolnshire <p>South East Lincolnshire</p> <p>DPD</p> <p>Any other South East Lincolnshire DPD/SPDs to be consistent with this DPD.</p>
Previous work	<ul style="list-style-type: none"> • Initial stakeholder engagement/Visioning and preparation of Sustainability Appraisal scoping report 	<ul style="list-style-type: none"> • January - April 2012

<p>Timetable for current and future work</p>	<ul style="list-style-type: none"> • Preparation of Preferred Options and Sustainability Appraisal report • Public participation on Preferred Options and Sustainability Appraisal report • Consideration of representations and discussions with stakeholders • Further work in response to the consideration of representations, the findings of additional evidence gathering and identification of options for site allocations • Preparation of 'Interim Statement' (including a set of revised Preferred Options in respect of strategic and development management policies; and site options for housing and other types of development) • <i>A 'Whole Plan Viability Assessment' of the emerging draft Interim Statement forms part of the above-mentioned preparation</i> • Public consultation on Interim Statement • Consideration of representations on the Interim Statement • Preparation of 'Draft Local Plan' • Public consultation on Draft Local Plan • Consideration of representations on Draft Local Plan • Formal submission to the Planning Inspectorate 	<ul style="list-style-type: none"> • May 2012 - April 2013 • May - June 2013 • June - December 2013 • January - December 2014 • January - September 2015 • <i>May - August 2015</i> • October - November 2015 • December 2015 - January 2016 • February - May 2016 • June - July 2016 • August 2016 • August 2016
---	---	---

	<ul style="list-style-type: none">• Public Examination• Consideration of Inspector's report• Adoption of Local Plan	<ul style="list-style-type: none">• November 2016• February 2017• February 2017
--	--	---

Appendix 2: South East Lincolnshire Local Plan Timetable
 The following chart sets out timescales and key milestones in the production of the Local Plan



NOTES:
 * At its meeting on 28 February 2014, the South East Lincolnshire Joint Committee Planning Committee resolved to prepare a single Local Plan document for South East Lincolnshire instead of a Strategy and Policies DPD and a Site Allocations DPD
 ** Preparation informed by a Whole Plan Viability Assessment

Appendix 3: Contact details:

For more information about any of the issues raised in this LDS please contact:

the South East Lincolnshire Joint Policy Unit

**C/o Planning Policy Team
Planning Department
South Holland District Council
Priory Road
Spalding
Lincs
PE11 2XE
Telephone: 01775 761161**

or

**C/o Forward Planning Team
Planning Department
Boston Borough Council
Municipal Buildings
West Street
Boston
Lincs
PE21 8QR
Telephone: 01205 314200**